



Prabina Bhujel, Fall 2024



River Eagles, Fall 2024



Kathleen Lutz, Fall 2024



Sue Kim, Fall 2024



Ryleigh Pardy, Fall 2024



Melissa Kim, Fall 2024



Libby Oram, Fall 2024



Rivin Hewage, Fall 2024



Meena Mukund, Fall 2024



Mia Sterling, Fall 2024

Clay Vessel

___/10 Idea development

Criteria for your finished Clay Vessel:

Clay skills

Strength, balance and surface finish

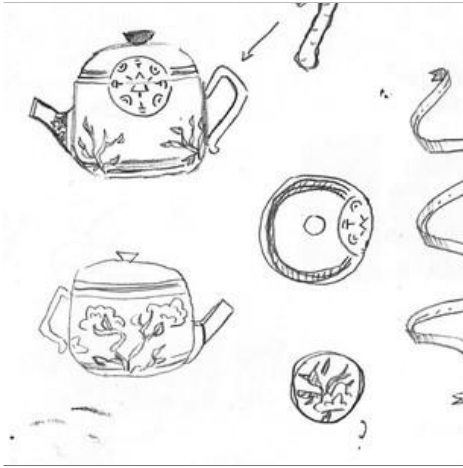
Quality of Carving

Complexity, quality, fullness, and craft

Daily Clean-up Habits

Cleaning table & floor to be streak-free

Building your vessel step by step



1. Develop your **idea** first!



2. Divide your clay into four pieces: one for a **base**, two for **coils**, and one for **everything else** and for emergencies.



3. Make the **bottom**: a disc of clay that is 1-1.5 cm thick and 7-10 cm in diameter. **Store any leftovers** in your bag.



7. **Stretch** the coils by **spreading** your fingers while rolling.



8. **Smear** your coils together using only **one finger** or one thumb.



9. **Don't pinch** on either side because you will make your pot very dry and thin.



13. Add a **foot** by attaching a coil.



14. **Scribe** and then **trim the lip**.



15. Coat your pot with **white slip**. Let it dry and add coats until there are **no streaks**.



4. Keep it fairly **rough** because smoothing it will dry it out.



5. Make a series of **coils** that are about 1-1.5cm thick.



6. Remember that you are **not squeezing** the coils. **Work quickly!**



10. **Smooth the inside** with your **fingers**. If you can't reach, it is OK.



11. Shape your vessel by **paddling** it with a wooden spoon or stick.



12. Shave it with a **knife**. Then **smooth** it with a metal/plastic/silicone **rib**.



16. Do a very **light rough sketch** of your drawing on your pot.



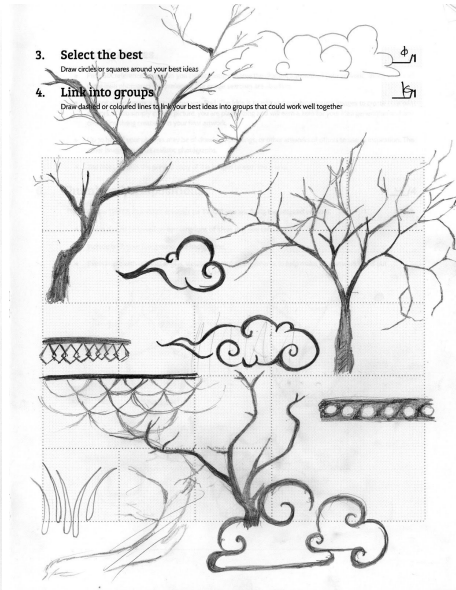
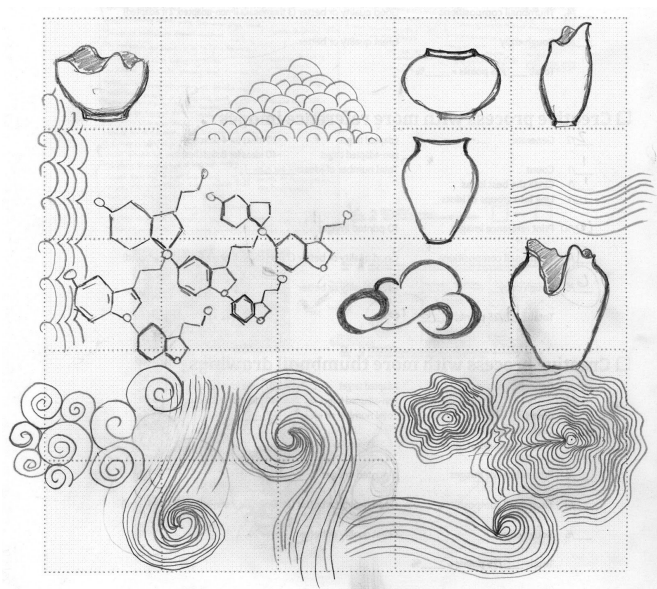
17. Take a sharpened pencil and **carve through the slip** into the brown clay.



18. Finally, carve your **name** on the bottom.

Idea generation

Antoinette O'Keefe's clay vessel

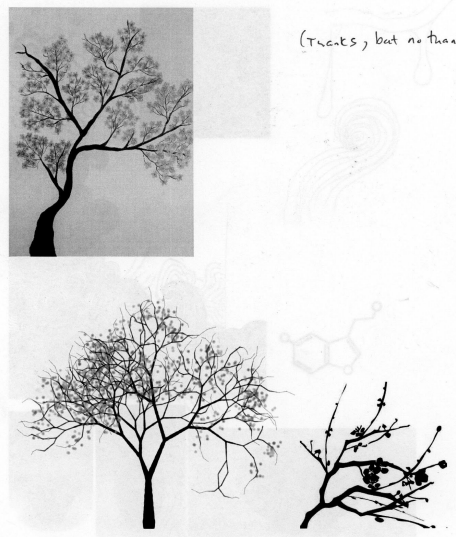
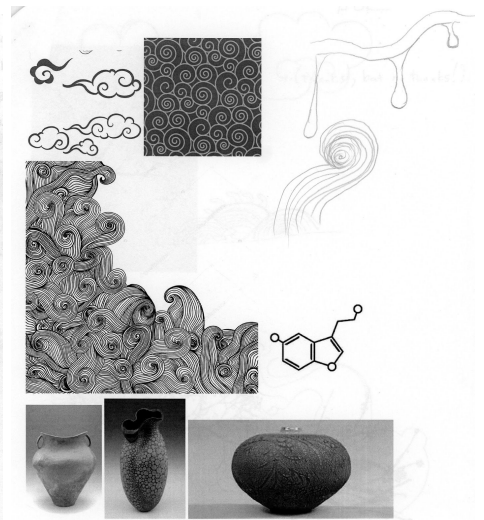
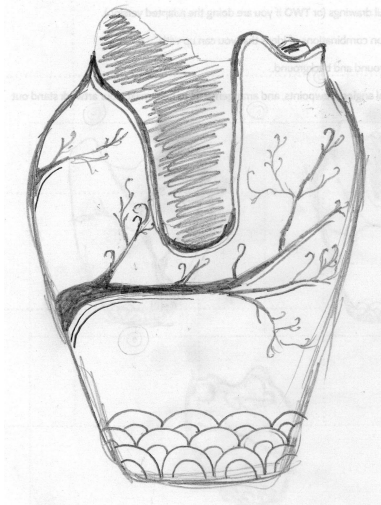
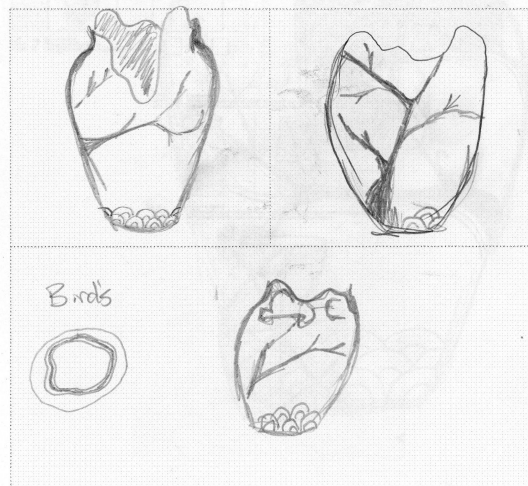


3. Select the best

Draw circles or squares around your best ideas.

4. Link into groups

Draw dashed or colored lines to link your best ideas into groups that could work well together.



Clay vessel evaluation criteria

| | |
|------------------------------|---|
| Clay skills | The strength, balance, and surface finish of your clay vessel. |
| Quality of carving | The complexity, quality, fullness, and craft of the patterns and line drawing on your vessel. |
| Daily clean-up habits | Cleaning your table and floor so it is clean and has no streaks. |

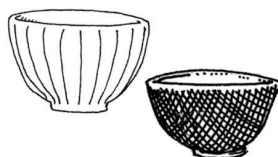
Vocabulary for the clay vessel

| | |
|--------------------|---|
| apron | a piece of cloth that you wear to protect your clothes from getting dirty. |
| carving | scratching into clay to change its shape or to make a picture or pattern |
| ceramic | a material that starts soft like clay, but then becomes very hard after it is cooked to a very high temperature |
| clay | a soft material used for making pots, bricks, and sculptures that becomes very hard when it is heated up. |
| coil | a thin piece of clay that looks like a snake |
| earthenware | a kind of clay that is fired to a lower temperature and that needs to be glazed before becoming watertight |
| foot | the bottom of a pot where it sits on a table |
| glaze | a material that you can paint onto ceramic that turns into glass when fired in a kiln |
| glazing | for clay: brushing on a paint-like layer to a pot that will later become a layer of glass; for painting: using very thin transparent layers of paint to change the colour |
| handle | the part of something that is used to lift or carry it |
| kiln | an oven used to heat up clay enough to become a hard ceramic |
| lid | the top of a pot that you can take off |
| lip | the top edge of a pot |
| paddling | hitting clay with wood to make it stronger, smoother, and a better shape |
| pattern | a drawing that repeats in a beautiful way |
| pinch | squeezing something between your thumb and finger |
| rib | a piece of silicone or wood used to smoothly shape some clay |
| score | carve Xs or parallel lines to help join clay together with slip |
| scraper | a piece of thin metal or plastic used to shave off thin pieces of clay |
| scribe | mark an even and straight line |
| shave | scrape bumps and fuzz from the surface of something |
| slip | a liquid clay that you can use like glue to attach things together, or paint onto your clay to change its colour |
| stretch | pulling something to make it longer |
| terracotta | an unglazed reddish-brown earthenware clay |
| transfer | to move or copy something |
| trim | remove extra clay with a tool |

BOWLS

wan, hachi

碗、鉢



RICE BOWLS
御飯茶碗
gohan jawan



DONBURI * BOWL
丼鉢
donburi bachi
* Rice covered with egg and / or vegetables and meat.



LARGE BOWL
大鉢
ōbachi



LARGE WIDE DISH
平鉢
hirabachi



NESTING BOWLS
入れ子
ireko



SMALL BOWLS
小鉢
kobachi



LARGE PLATE
大皿
ōzara



SOBA* CUPS
そば猪口
soba choko

* Buckwheat noodles - the cup is for the sauce into which they are dipped.

OTHER POTS

CHINESE SPOON
散り蓮華
chirirenge



CHAWAN MUSHI* POT
茶碗蒸し碗
chawan mushi wan
*A steamed, savoury egg custard.



PICKLE POTS
漬け物鉢
tsukemono bachi



TIERED BOX
段重、重ね鉢
danjū,
kasane bachi



DISH WITH HANDLE
手鉢
tebachi

90

shokki
食器

COOKING AND EATING



GRATING DISHES
おろし皿
oroshi zara



SOY SAUCE JUGS
しょうゆ差し
shōyū sashi



SESAME SEED ROASTER
ゴマ煎り
goma iri

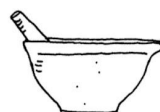


SMALL PICKLE POTS
珍味壺
chinmi tsubo

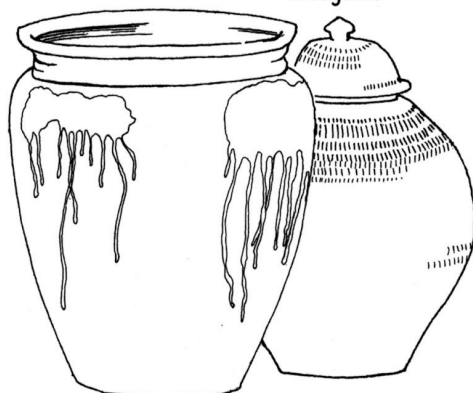


PICKLE MAKING POT
漬物鉢
tsukemono bachi

the heavy lid acts as a weight to press down the pickles inside.



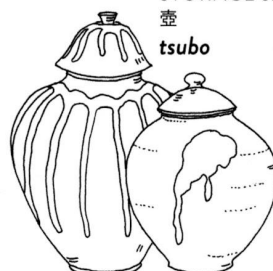
MORTAR / GRINDING BOWL
すり鉢
suribachi



LARGE WATER JARS
水がめ
mizugame



BOWL WITH SPOUT
片口
katakuchi



STORAGE JAR
壺
tsubo



COOKING POT
行平鍋
yukihiranabe



CASSEROLE
土鍋
donabe
usually used for cooking over direct flame

CUPS

yunomi to choko

湯呑みと猪口



101

SAKE CUPS

ぐい呑み
guinomi

nomiyōki

飲み容器

DRINKING VESSELS

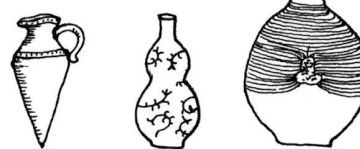


SMALL SAKE CUPS

猪口
choko

SAKE BOTTLES

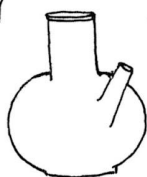
德利
tokkuri



HIP FLASK
抱瓶
dachibin



kambin
燗瓶



choka
チョカ



karakara*
カラカラ

POTS FOR WARMING LIQUOR



MUG
マグカップ
magukappu



CUP AND SAUCER
碗皿
wanzara

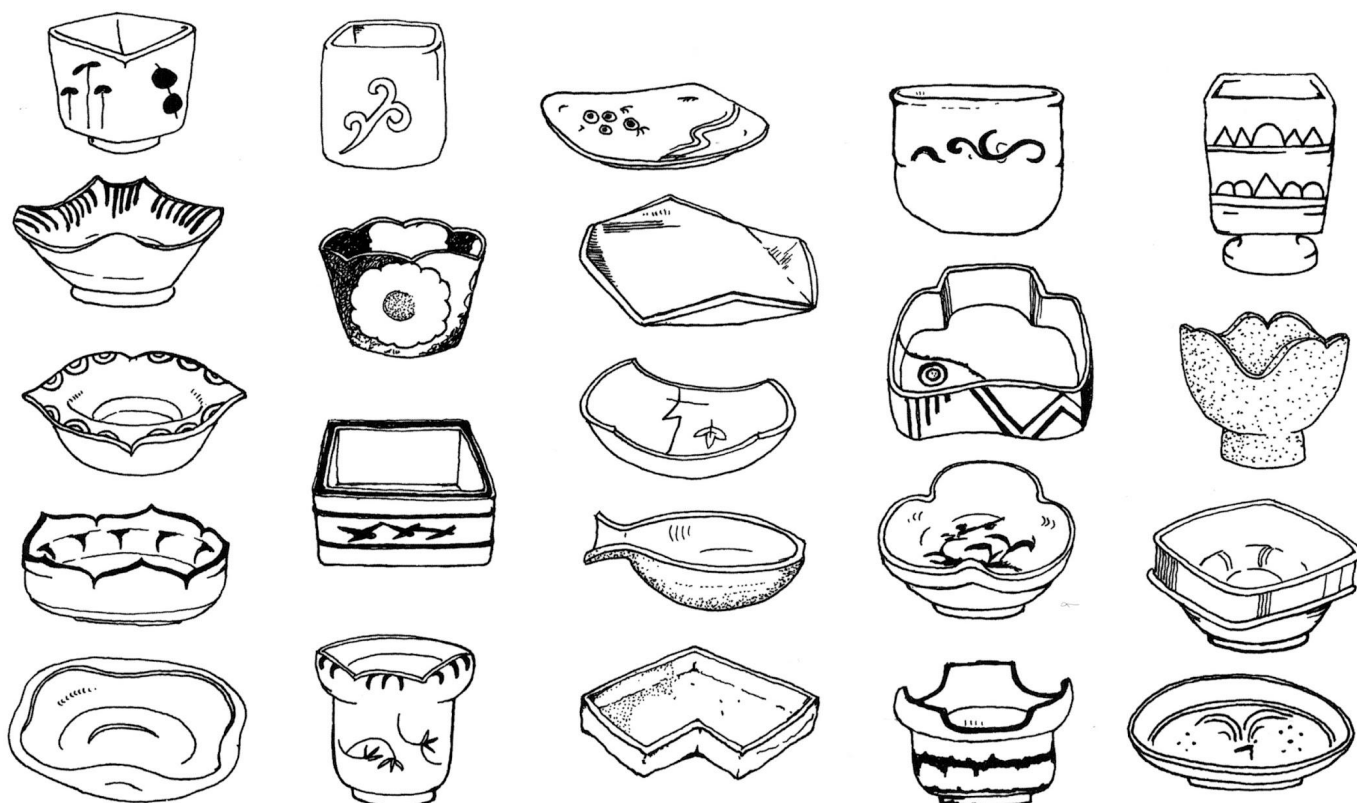


JUG / PITCHER
ジャグ、ピッチャー
jagu / picchaa

*karakara used to be made (esp. in Okinawa) enclosing beads, which would rattle to indicate the flask was empty-
karakara is said to be the sound of the rattling beads. Kara also means empty.

SMALL SERVING DISHES

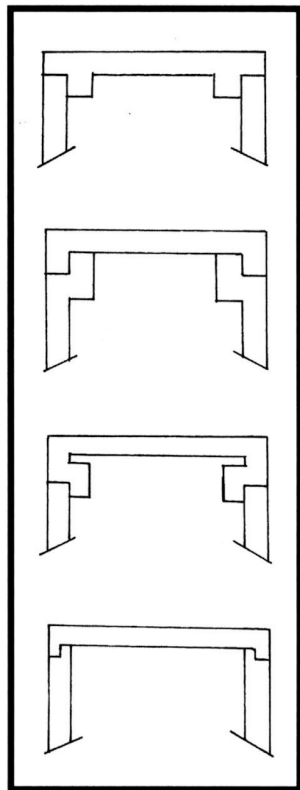
mukōzuke to kozara
向こう付と小皿



102

LIDS

futa
蓋

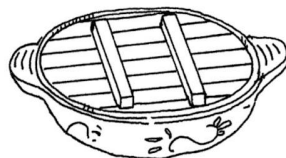


IVORY LID
象牙の蓋
zōge no futa

LAQUER LID
塗り蓋
nuribata



WOODEN LID
木の蓋 (鍋蓋)
ki no futa (nabe buta)



BENT RIM
首型
kubigata

FLAT LID
平蓋
hirabuta

DOMED LID
山蓋
yamabuta

ROLLED OVER RIM
折り曲げて作る気持
orimagete tsukuru kimochi

SPLIT GALLERY RIM
土を半分下げ
て作る気持
tsuchi o hanbun sagete
tsukuru kimochi

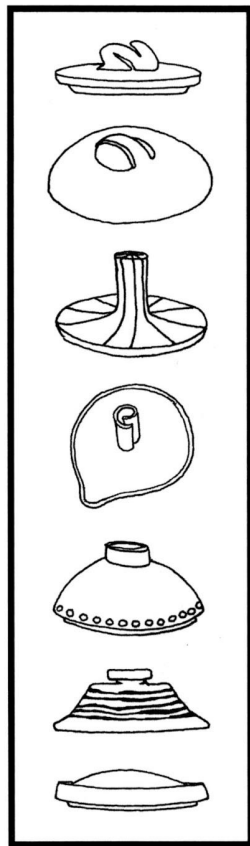
RECESSED KNOB LID
落とし蓋
otoshibuta

THE LID FITS WELL
蓋が合う
futa ga au

THE LID FITS BADLY
蓋が合わない
futa ga awanai

KNOB
つまみ
tsumami

104



These pages are from:

Simpson, Kitto, and Sodeotka,

The Japanese Pottery Book, Revised Edition, 2014

TYPES OF FOOT *kōdai*

高台

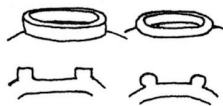
'SNAKE'S EYE' FOOT
janome kōdai

MOST COMMON



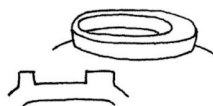
蛇ノ目高台 (普通高台)

'RING' FOOT
wa kōdai



輪高台

'CRESCENT MOON' FOOT
mikazuki kōdai



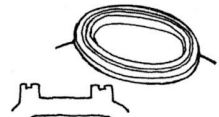
三日月高台

'HELMET' FOOT
tokin kōdai



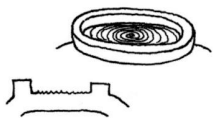
兜巾高台

'DOUBLE' FOOT
nijū kōdai



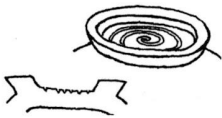
二重高台

'WHIRLPOOL' FOOT
uzumaki kōdai



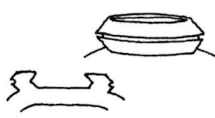
渦巻高台

'SPIRAL SHELL' FOOT
kaijiri kōdai



貝尻高台

'BAMBOO NODE' FOOT
takenofushi kōdai



竹ノ節高台

'SPLIT' FOOT
wari kōdai



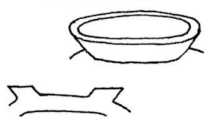
割高台

four } split foot
two }
warijūmonji
wariichimonji } *kōdai*

割十文字高台

割一文字高台

'SHAMISEN PLECTRUM' FOOT
bachi kōdai



撥高台

'CUT' FOOT
kiri kōdai



切高台

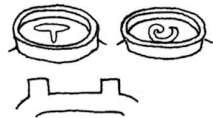
cross cut } foot
bar cut }
kirijūmonji
kiriichimonji } *kōdai*



切十文字高台

切一文字高台

'NAIL CARVED' FOOT
kugibori kōdai



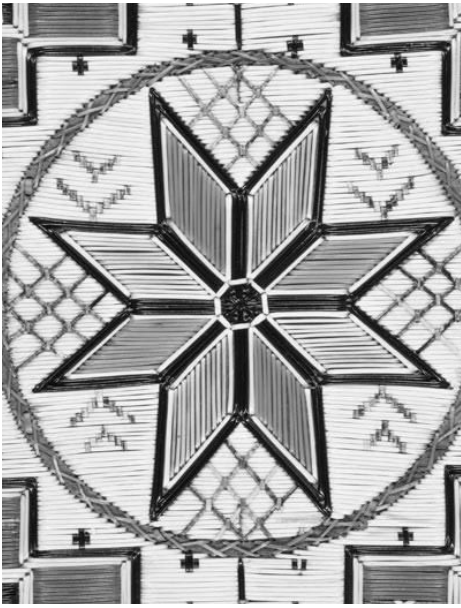
釘彫高台

'CRINKLED CLOTH' FOOT
chirimen kōdai



縮緬高台

Historical Patterns from around the world



Mi'qmaq



Maliseet



Art Nouveau



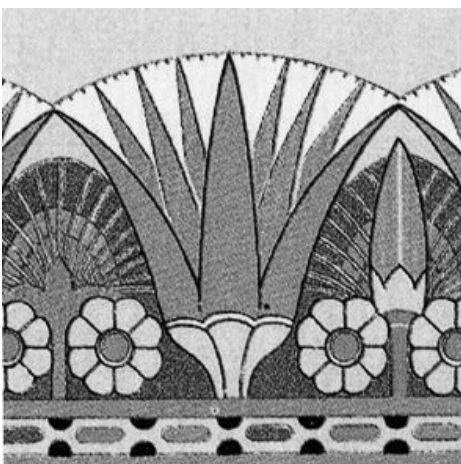
Celtic



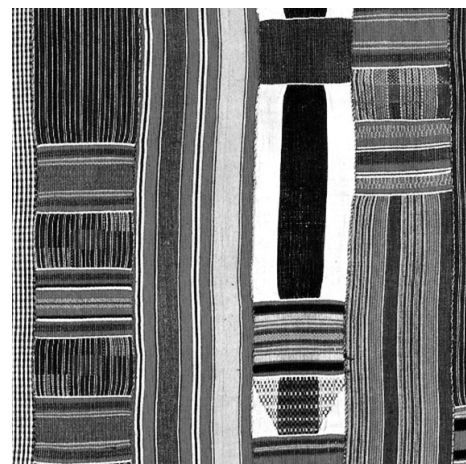
China



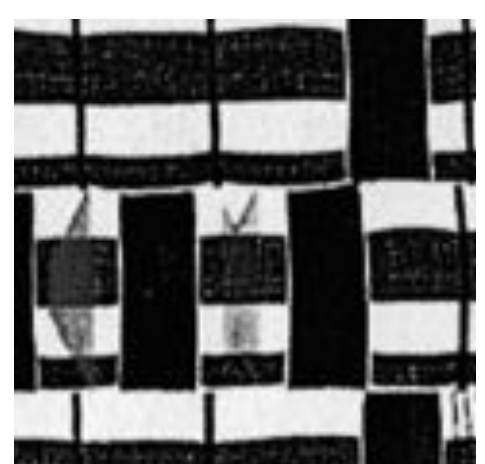
China



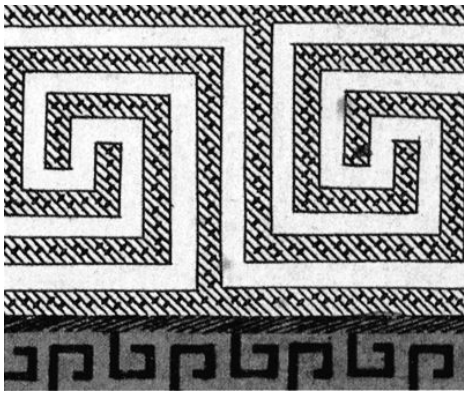
Egypt



Ghana



Ghana



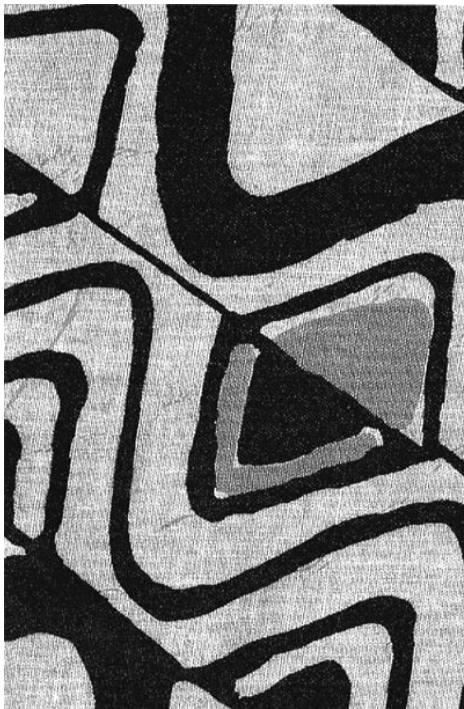
Greece



India



Japan



Mali



Navajo



Roman



Pakistan



Pacific Northwest Coast



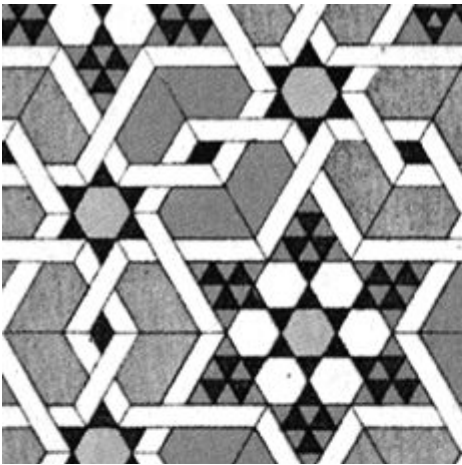
Turkmenistan



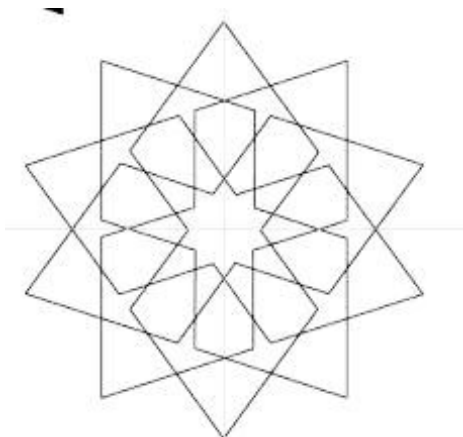
Persia



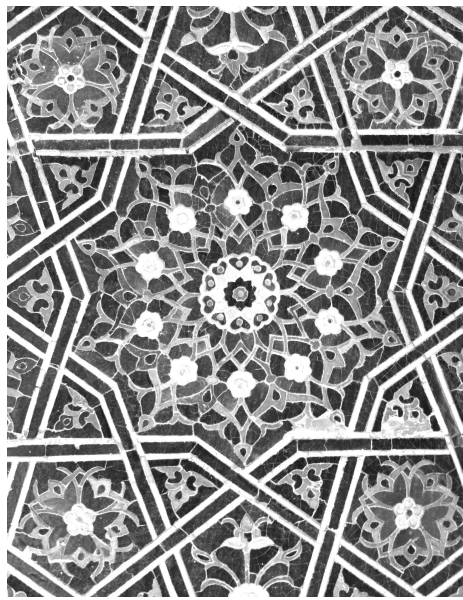
William Morris (Arts and Crafts)



Persia



Islamic pattern



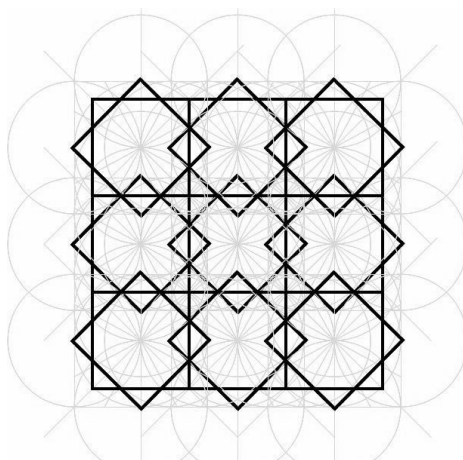
Syrian



Persia



Islamic calligraphy



Islamic pattern

Idea Development

Name: _____

1 **Generate ideas**

maximum of 50%

Number of **words** → _____ × 1% = _____%

Number of **simple** sketches → _____ × 3% = _____%

2 **Select the best and join together ideas**

Circle the **best** ideas circled = ☐ 5%

Link into **groups** of ideas linked = ☐ 5%

3 **Print reference images**

_____ images × 5% = _____%

maximum of 10 images

4 **Rough copy**

_____ drawing × 25% = _____%

great quality or better

Total = _____%

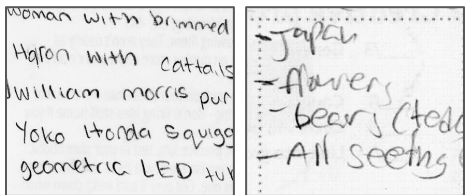
NOTE: If you simply copy a picture from the internet, your mark drops to 25%.

Generate ideas!

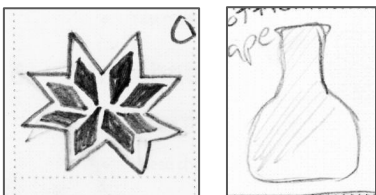
Use lists, a web map, or simple drawings to come up with a LOT of ideas! If you already have an idea in mind, choose that as your central theme and expand upon it. Let your ideas wander - one idea leads to another. Drawings can be details of source images, different viewpoints, textures, technical experiments, etc.

Adding up points for ideas:

Number of **words**
→ ____ × 1% = ____%



Number of **sketches**
→ ____ × 3% = ____%



Select the best

Draw circles or squares around your best ideas

☐ *You have selected the best 3-7 ideas = 5%*

Link the best into groups

Draw dashed or coloured lines to link your best ideas into groups that could work well together

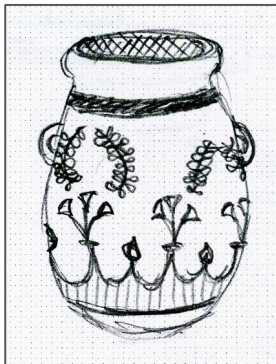
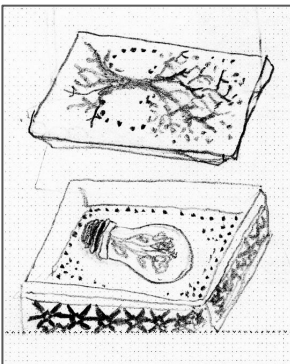
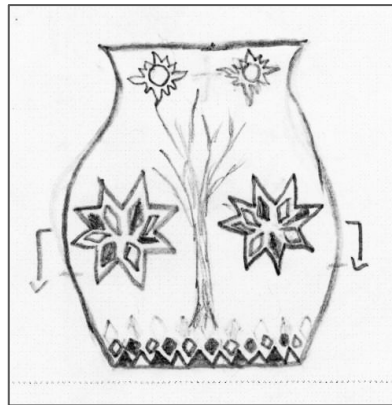
☐ *You have joined the best ideas with lines = 5%*

Print references

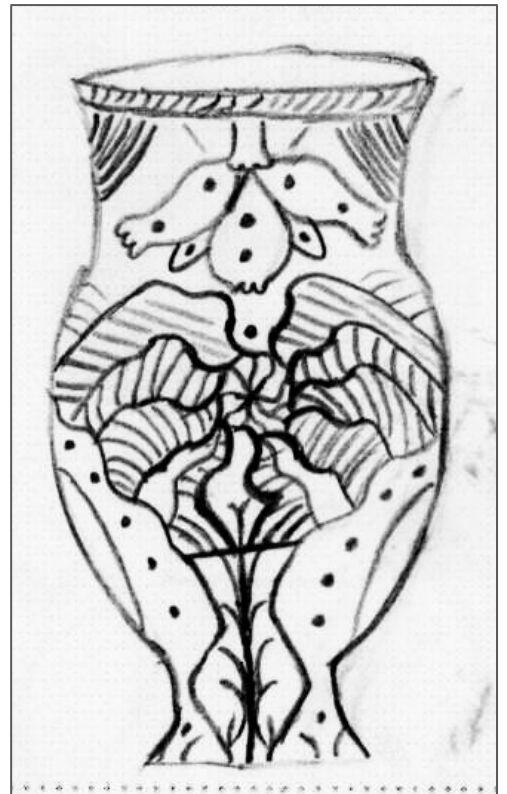
Number of reference photos → ____ × 5% = ____%

- Print **SIX** reference images so you can accurately observe the challenging parts of your artwork. Taking your own and using own photographs is preferred, but image searches are also fine.
- **Do not simply copy a picture that you find.** The idea is to edit and combine source images to create your own artwork. If you simply copy a picture, you are plagiarizing and will earn a zero for your idea generation and any criteria involving creativity in your final artwork.
- Up to half of your pictures may be of drawings, paintings, or other artworks of others to use as inspiration. The other images must be realistic photographs.
- You must hand in the **printed** copy of the images to earn the marks.

Examples of ROUGH drawings



Rough drawing → up to 25% = ____%

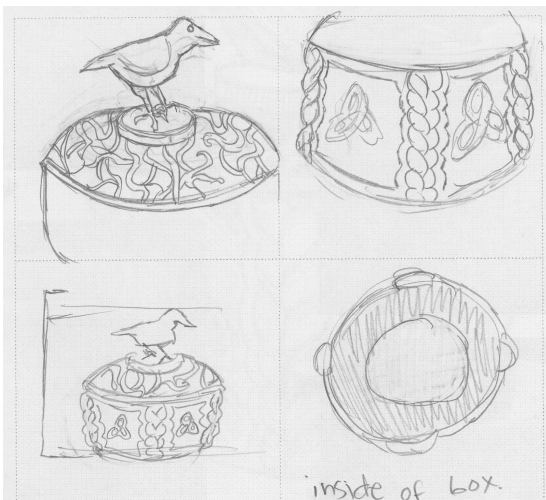
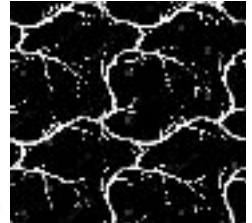
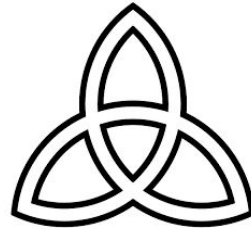
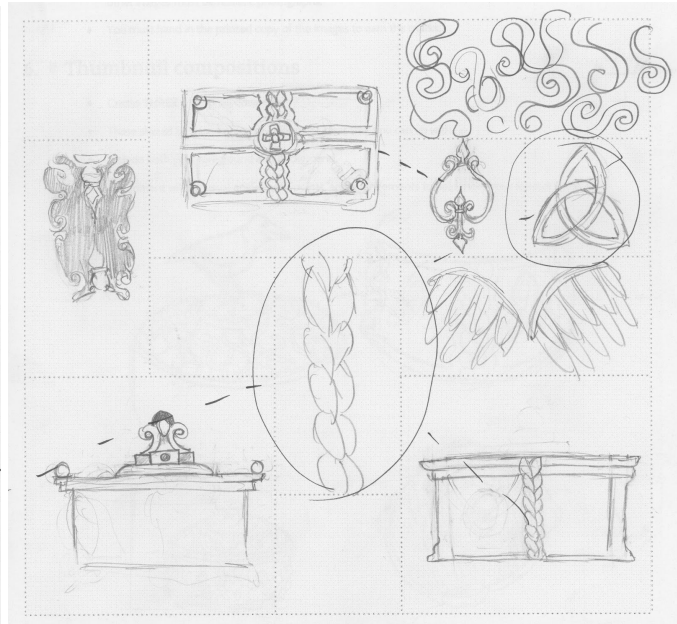
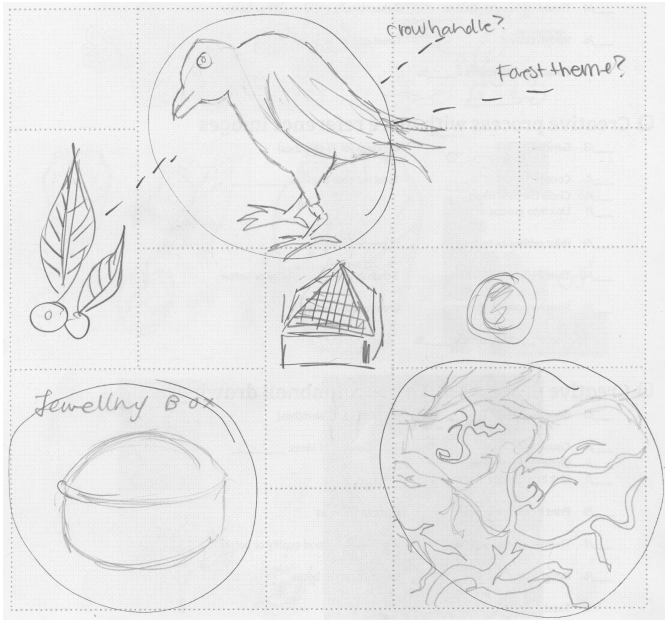


Rough drawing

- Take the best ideas from your thumbnails and combine them into an improved rough copy.
- Use this to work out the bugs and improve your skills before you start the real thing.
- If you are using colour, use paint or coloured pencil to show your colour scheme.
- Draw in a frame to show the outer edges of your artwork.
- ***Remember to choose a non-central composition.***

Idea generation

Hayden Coyle's clay vessel





Esra Hussein Ali Mahmoud, Fall 2023



Islau Hamadi Juma, Fall 2023



Marina Saez Vinals, Fall 2023



Kadince Hunter, Fall 2023



Payton Lohnes, Fall 2023



Braedan Alguire, Fall 2023



Carson Shea, Fall 2023



Elijah Cochrane, Fall 2024



Shannen Irvine, Fall 2023



Cami Raquet, Fall 2023



Tina Chandra Sekar, Fall 2023



Lisa Khutjwe, Fall 2023